

Lewis & Clark

Art EXPEDITIONS™

Make your **OWN** new discoveries
on a fun and rewarding adventure!

Discover America

THE LEWIS AND CLARK COMMEMORATIVE PAINTINGS

by artist

STUART H. MORSE

You are Invited to host this special exhibit of ten limited edition prints of the original paintings each accompanied by an education panel on reexploring the route 200 years after Lewis and Clark.

Since 1999, artist Stuart Morse has been creating a series of ten, 5 foot by 10 foot commemorative paintings celebrating the legacy of the Lewis and Clark Expedition. As the flagship of the Lewis and Clark Art Expeditions programs, these contemporary landscape paintings capture the communities and river environments as seen today along the river. The original paintings are finding their way into prominent locations in each state along the route. The Missouri painting, "A Journey's Quiet Guide", was unveiled in the rotunda of the Missouri State Capitol in May 2003.

A special limited edition print series of these monumental paintings are the core of the exhibit. Each painting has been masterfully reproduced for this special traveling exhibition. The exhibit includes the framed prints as well as educational display panels entitled "Exploring the Route".

The educational panels describe the exploration process and the tools of a current day explorer including research, journals and photographic documentation by the artist. Stuart Morse took over 9000 photographs with a special camera and vehicle setup to study and document the landscape and communities in each of the ten states along the route. This process allowed him to select a landscape vista for each painting that best described the unique landscape qualities of that state in relation to the other route states.



LEGEND

..... P.O. Box 74
— Chesterfield, Missouri 63006
..... phone/fax (636) 458-0886
----- www.artexpeditions.com

SCALE



THINKOMETERS

A Division of MORSE FINE ART STUDIOS, INC.



Make your own new discoveries
on a fun and rewarding adventure!

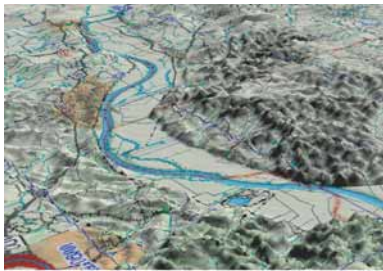


Missouri



Kansas

Two examples from the series showing the unique landscape characteristics of each state along the route.



Sample images from the education panels: one for each painting in the exhibit.

What are the opportunities for displaying this special exhibit and how does it benefit my community?

1. The print series is available for communities to display at a local venue or as part of a special exhibition tied to a community event.
2. The exhibit can be used as an added attraction for visitors to your community or be used as part of a special VIP reception to kick off your next event.
3. The exhibit can be partnered with the Community Youth Mural Project.
4. The exhibit is educational and can be expanded to include special features about your community. As an exhibit host, you have the option of incorporating photographs, facts, artwork or essays into the exhibit as a way to encourage visitors to explore your community or its unique tie to the Lewis and Clark experience.

What type of display items can our community incorporate into the exhibit and how many items are needed?

1. Additional display items may include special facts or information about your community, current or historic photographs, children's artwork, special text or writings, articles, etc.
2. The number of items is determined by the exhibit host and may be based on space availability.

LEGEND

A Division of MORSE FINE ART STUDIOS, INC.

----- P.O. Box 74
 ——— Chesterfield, Missouri 63006
 phone/fax (636) 458-0886
 ----- www.artexpeditions.com

SCALE



THINKOMETERS



Exhibit parameters:

- 1) Exhibit duration: 5 weeks.
- 2) Rental fee: \$950.00
- 3) Rental fee may be offset with grants applying to the arts and/or Lewis and Clark.
- 4) Number of Works: 20 works.
 - o 10 Limited edition prints of original 5ft by 11ft paintings. Framed prints measure approximately 2 feet high by 31/2 feet long.
 - o 10 partner "Exploring the Route" education panels to accompany each print. Panels describe process in creating original painting including photographs, maps, sketches and journal entries. Dimensions of panels are approximately 2 feet by 2 feet. To accompany respective framed print.
- 5) Media: Limited Edition Giclee' prints on paper and digitally printed maps, photographs and sketches.
- 6) Curator: Stuart Morse, Lead Artist, Master Art Guide, Lewis and Clark Art Expeditions:
Stacey Morse, Co-owner Morse Fine Art Studios, Inc.
- 7) Organized by: Lewis and Clark Art Expeditions division of Morse Fine Art Studios, Inc.
- 8) Security: Exhibit is not particularly difficult to install or secure volunteers may assist if supervised by a trained staff person. Exhibit requires that host organizations must control temperatures, humidity and lighting. Exhibit location must have a reasonable amount of supervision overseeing artwork.
- 9) Shipping: Van line. Shipment to you is included in price. Host is responsible to repack via instructions and for shipping to next destination of exhibit.
- 10) Running feet: 85 feet minimum, minimum 7 foot increments.
- 11) Available dates: May 2004- May 2007
- 12) Fee Includes:
 - o Educational Materials
 - o Text panels
 - o "Exploring the Route" educational panels describing the process with maps, photographs, sketches and journal entries.
 - o Reproducible Exhibit Guide
 - o Other materials to be determined
 - o Installation instructions
 - o Custom designed and built crates
 - o Print sale referral: Host is entitled to revenue commission on sale of additional limited edition prints that are referred or generated through viewing of the exhibit at their venue. Purchaser must mention host venue at time of purchase from Exhibit Organizers.
- 13) Insurance: Host is responsible for insurance of exhibit while at location.
- 14) Note: Artist Stuart Morse is available for lecture and print signing at venues hosting exhibit.

Contact a Lewis & Clark Art Expeditions leader for more information on this exhibit and to discuss how it can best benefit your community or next event!

LEGEND

A Division of MORSE FINE ART STUDIOS, INC.

----- P.O. Box 74
— Chesterfield, Missouri 63006
----- phone/fax (636) 458-0886
----- www.artexpeditions.com

SCALE



State Exhibits

THE LEWIS AND CLARK COMMEMORATIVE PAINTINGS

STUART H. MORSE

Unveiling of painting in Missouri State Capitol Rotunda.



Pictured is Governor Holden, Artist Stuart Morse and Senator Michael Gibbons.

A Journey's Quiet Guide



*Unveiling of painting
in Kansas
State Capitol.*

By Way of Fertile Ground

Pictured is Artist Stuart Morse, Merrill Morse,
Governor Sebelius, Stacey Morse and True Morse.

Unveiling of painting in North Dakota Heritage Museum.

Majestic Rhythm of the Plains

**Make your own new discoveries
on a fun and rewarding adventure!**

Background



Stuart Morse is a fine art painter and Master Art Guide of the Lewis and Clark Art Expeditions, a division of Morse Fine Art Studios, Inc. of St. Louis, MO.



Comemorative paintings in studio. Will be available in print editions.

Since 1999, Stuart Morse has been creating a series of ten, 5' x 10' commemorative paintings celebrating the history of the Lewis and Clark Expedition. As the flagship of the Lewis and Clark Art Expeditions, these contemporary landscape paintings capture the communities and river environments along the route. The paintings will be displayed in different venues along the route and will be available as fine art editions.

The adventures and experiences of documenting the Lewis and Clark route had a strong fulfilling impact on Stuart and his partner Stacey Morse. They decided to combine their Art Expeditions experiential learning program with the Lewis and Clark experience, and developed a local and national program to allow participants to discover their connection to Lewis and Clark. This is the origin of the Lewis and Clark Art Expeditions, where the result is a celebration of the diverse and creative spirit of exploration within all of us.

The self-enlightening adventures engage participants and communities to make their own discoveries about their distinctive history, environment and connection to Lewis and Clark. Through interactive community events, half-day workshops and multi-day travel adventures, Lewis and Clark Art Expeditions' Master Art Guides lead participants to learn to explore "outside the box". Using photography, sketching, painting and journaling, participants set out on an exploration to document and communicate the environments and history of the communities they encounter. The artwork created by participants is a visual celebration of their discoveries and a conclusive statement on the importance of diversity in our nations history.

For more information on the Lewis and Clark Art Expeditions commemorative paintings, community partnerships, and related programs, please visit us at www.artexpeditions.com.



Stuart leading participants in the field



Interactive community events.



Explore...Create...Succeed!

LEGEND

- P.O. Box 74
- Chesterfield, Missouri 63006
- phone/fax (636) 458-0886
- www.artexpeditions.com

A Division of MORSE FINE ART STUDIOS, INC.

SCALE

