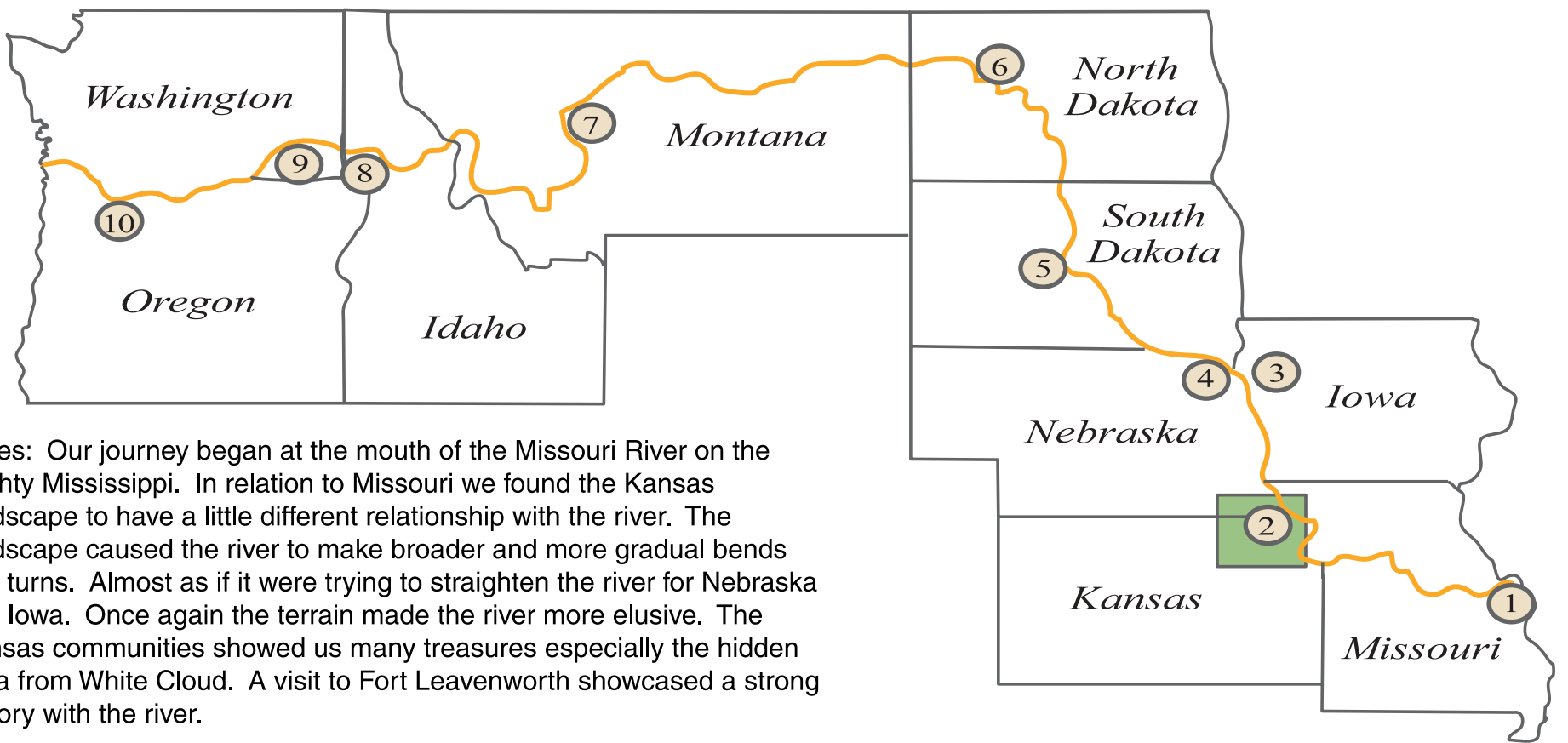
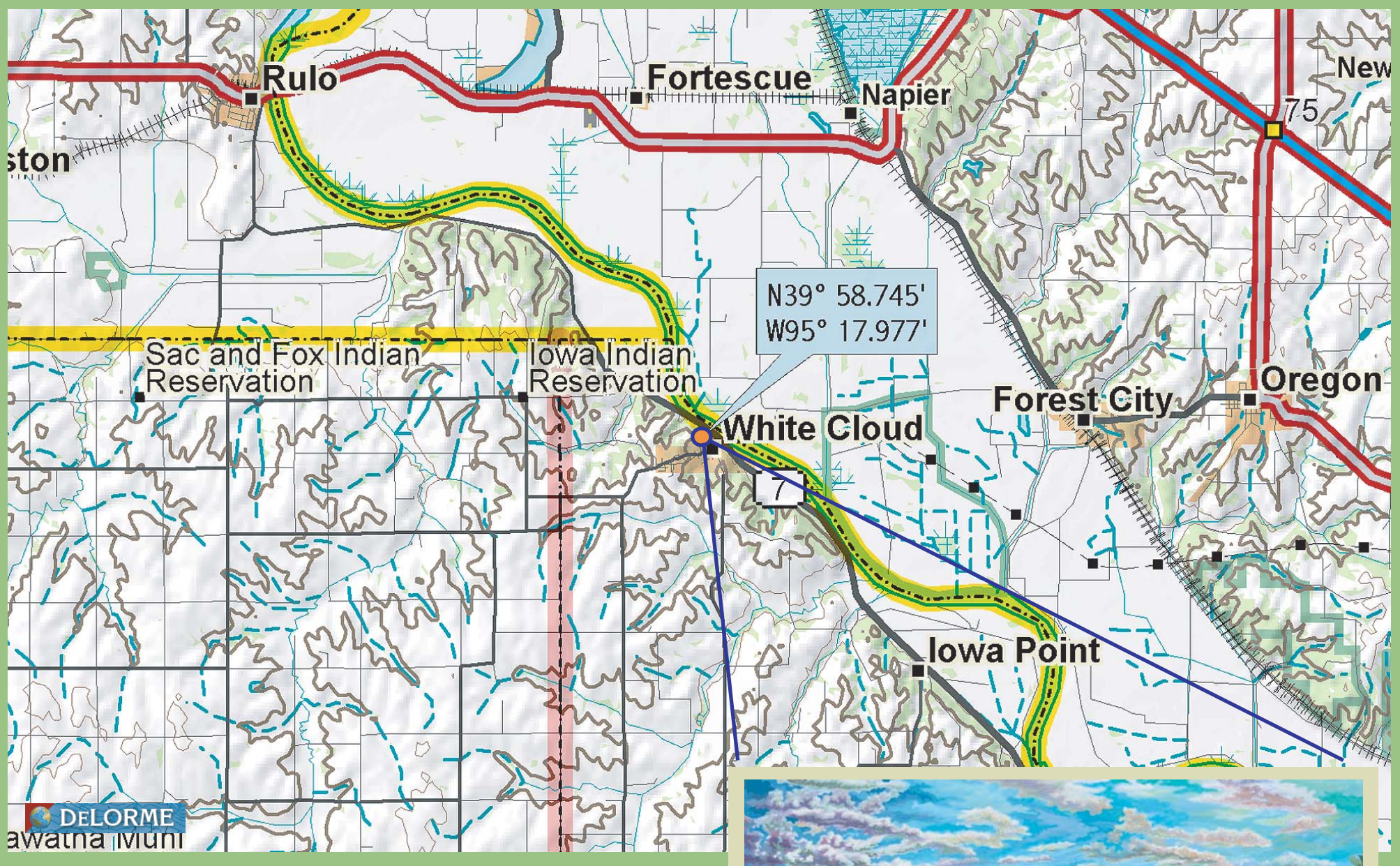


Discover America: Kansas



Notes: Our journey began at the mouth of the Missouri River on the Mighty Mississippi. In relation to Missouri we found the Kansas landscape to have a little different relationship with the river. The landscape caused the river to make broader and more gradual bends and turns. Almost as if it were trying to straighten the river for Nebraska and Iowa. Once again the terrain made the river more elusive. The Kansas communities showed us many treasures especially the hidden vista from White Cloud. A visit to Fort Leavenworth showcased a strong history with the river.



A slow emergence from the Ozark Hills and a turn North towards the plains. The river reveals a methodical partnership with the fertile farms and hills. The landscape is slowly loosening its grip. This view from White Cloud Kansas is the highest point we encountered, able to view four states.

